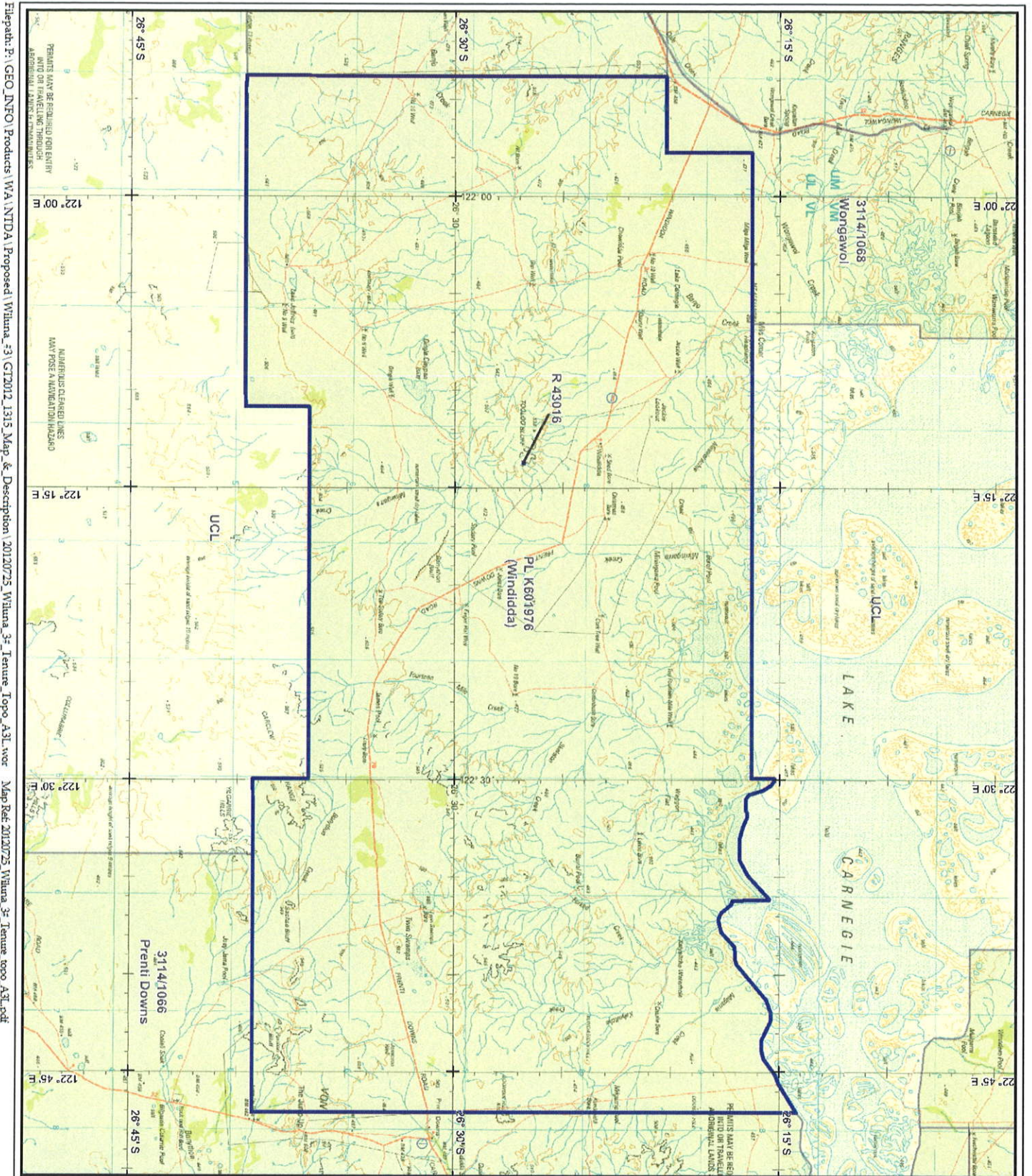


ATTACHMENT C MAPS



GGPY



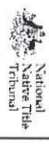
NATIVE TITLE DETERMINATION APPLICATION
Wiluma #3
 PL K601976 - Application Area

NOTE: To determine areas subject to claim within the external boundary, reference to the application description is necessary.
 Map created by: Geospatial Services,
 National Native Title Tribunal (25/07/2012)
 Pastoral Lease data sourced from Landgate,
 WA (27 July 2011)

- Land Tenure**
- Freehold and unknown are uncoloured
 - Aboriginal Freehold
 - Convertible Lease
 - Other Lease
 - Pastoral Lease
 - Reserve/Park
 - Unallocated Land

© Commonwealth of Australia 2012
 The Registrar, the National Native Title Tribunal and its staff, members and agents and the Commonwealth (collectively, the Commonwealth) accept no liability, and give no undertakings, warranties or guarantees concerning the accuracy, completeness or fitness for purpose of the information provided. In return for you receiving this information you agree to release and indemnify the Commonwealth and third party data suppliers in respect of all claims, expenses, losses, damages and costs arising directly or indirectly from your use of the information and the use of the information you obtained from any third party.

0 25 KILOMETRES
 Latitude and Longitude based on Geocentric Datum of Australia 1994
 New Projection



Location Diagram

